

Reference	FM 4.93 Rev 2
Release Date	October 2013



Fire Protection Systems Information

H60 Steel Bulkhead

Fire towards Insulated Side

Flat Layer System

Accompanies Method Statement FM-MS 01 PW

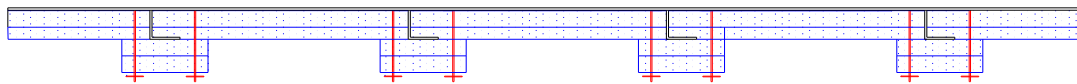
Product	FireMaster Marine Plus Blanket
Application Requirements	40mm of 70 kg/m ³ Blanket applied in two layers applied over bulkhead plate and stiffeners.
Anchoring	CD welded steel pins 3mm diameter 12 to 25mm longer than blanket thickness. Friction fit retaining washers.
Weight	5.6 kg/m ² (as applied to flat area)
System Drawing Reference	FM CAD 08-4.93
System Features	Flat system. Simple and minimal anchoring requirements.
Certification	DNV

Reference	FM 4.93 Rev 2
Date of Issue	October 2013

**Drawing FM CAD 08-4.93
H60 Bulkhead Fire To Insulated Side
Only**

Blanket width 610mm installed in between vertical stiffeners

Stiffeners covered with two strips of 40mm blanket for minimum width of 200mm



Fire Exposed Side

